

ENC Workforce Statistics - Personnel Sub Committee - 01 February 2011

1. Staff Sickness

1.1 Number of days per FTE * lost to sickness for ENC:

Total sickness levels (Rolling 12 month total)	Days lost per FTE
	ENC
01 January 2010 to 31 December 2010	6.93

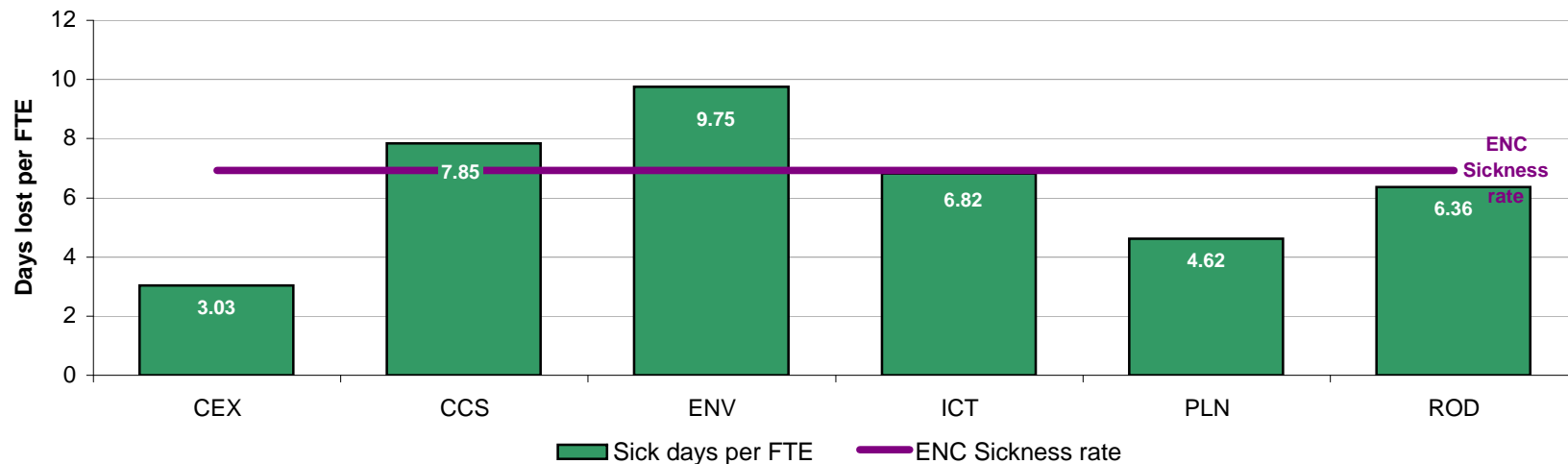
Previous ENC sickness levels were as follows (in days): 6.83(09/10), 5.84 (08/09), 9.37 (07/08), 7.10 (06/07) 7.30 (05/06)

In 2010 the national averages were as follows:

public sector average	9.6 days
all sector average	7.7 days
private sector average	6.6 days

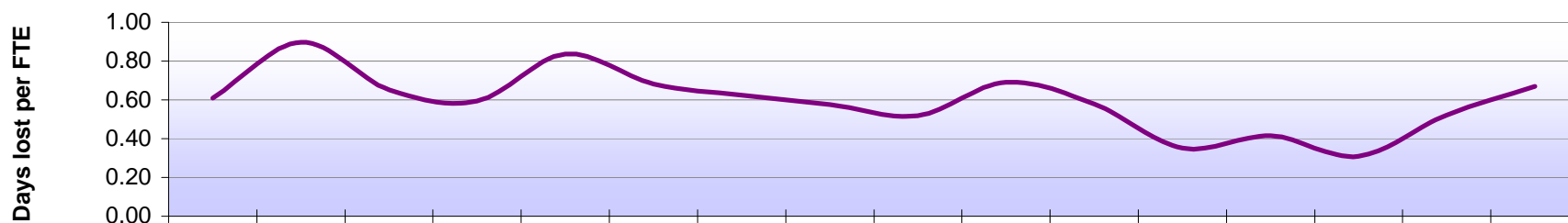
1.2 Number of days per FTE lost to sickness for each Service Area:

Service area sickness totals (12 month rolling total) 01/01/10 - 31/12/10



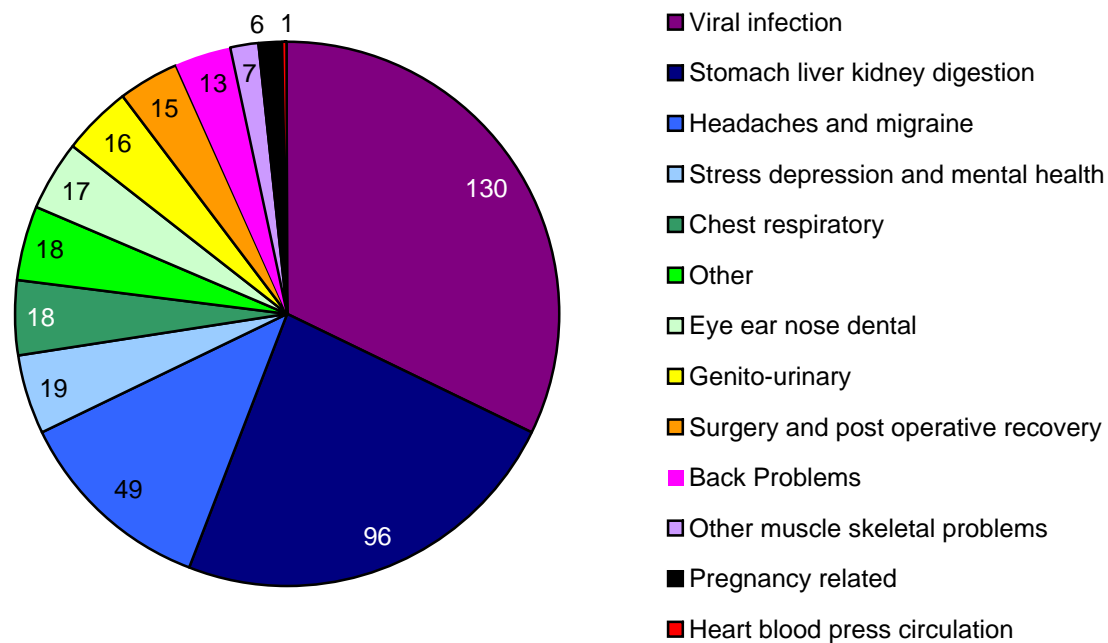
*FTE - full time equivalent

1.3 Number of days lost to sickness from September 2009 - December 2010:



	Sep-09	Oct-09	Nov-09	Dec-09	Jan-10	Feb-10	Mar-10	Apr-10	May-10	Jun-10	Jul-10	Aug-10	Sep-10	Oct-10	Nov-10	Dec-10
No. of days lost per FTE	0.61	0.90	0.65	0.59	0.84	0.68	0.62	0.58	0.52	0.69	0.58	0.35	0.42	0.31	0.52	0.67

1.4 Reasons for sickness - Number of incidents (short and long term sickness) from Jan 2010 - Dec 2010:



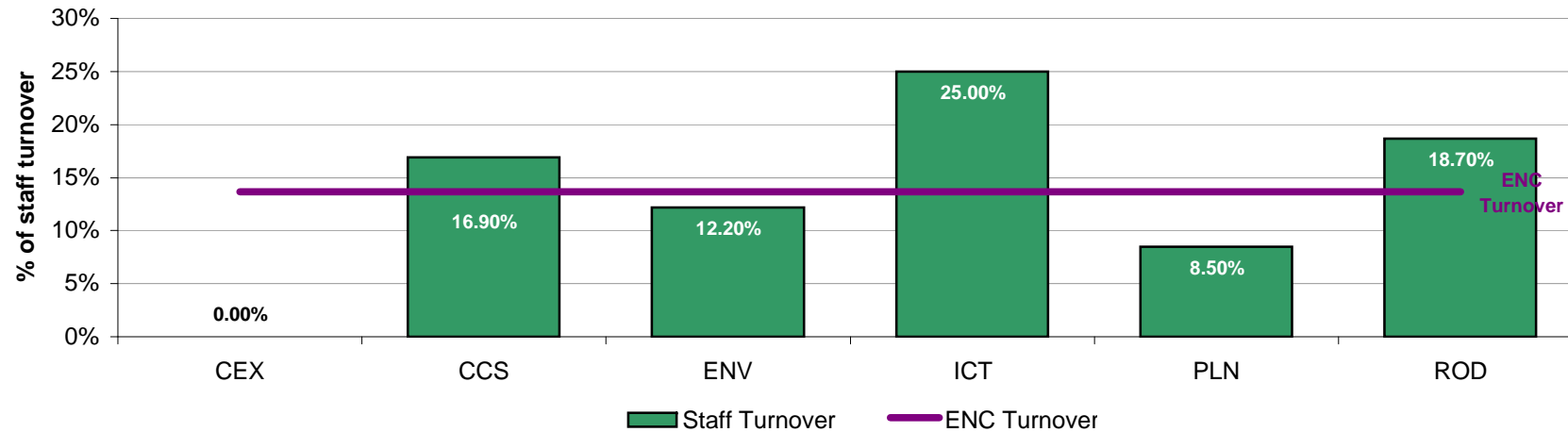
2. Staff Turnover

2.1 Percentage of staff leaving out of the total number of staff at ENC

Staff Turnover (Rolling 12 month total)	Percentage of leavers ENC
01 January 2010 to 31 December 2010	13.69%

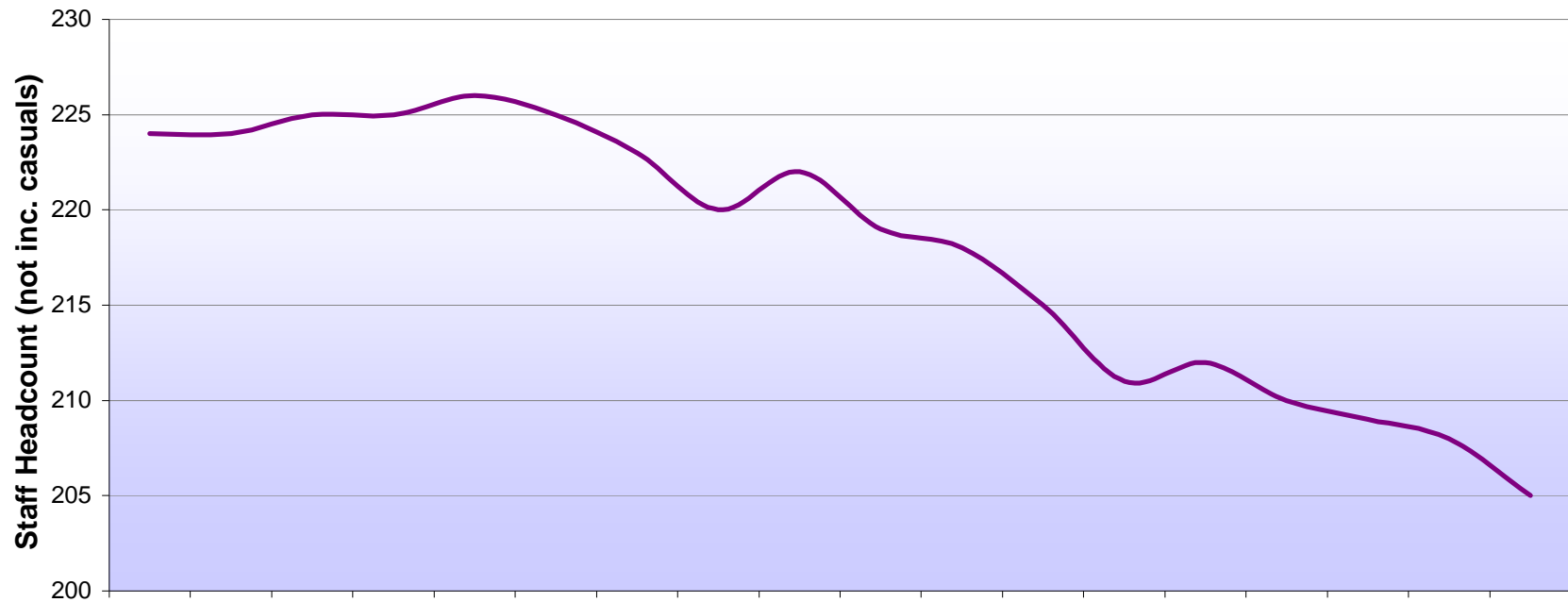
2.2 Percentage of staff leaving in each Service Area out of the total number of staff in the service area

Service area staff turnover (12 month rolling total) 01/01/10 - 31/12/10



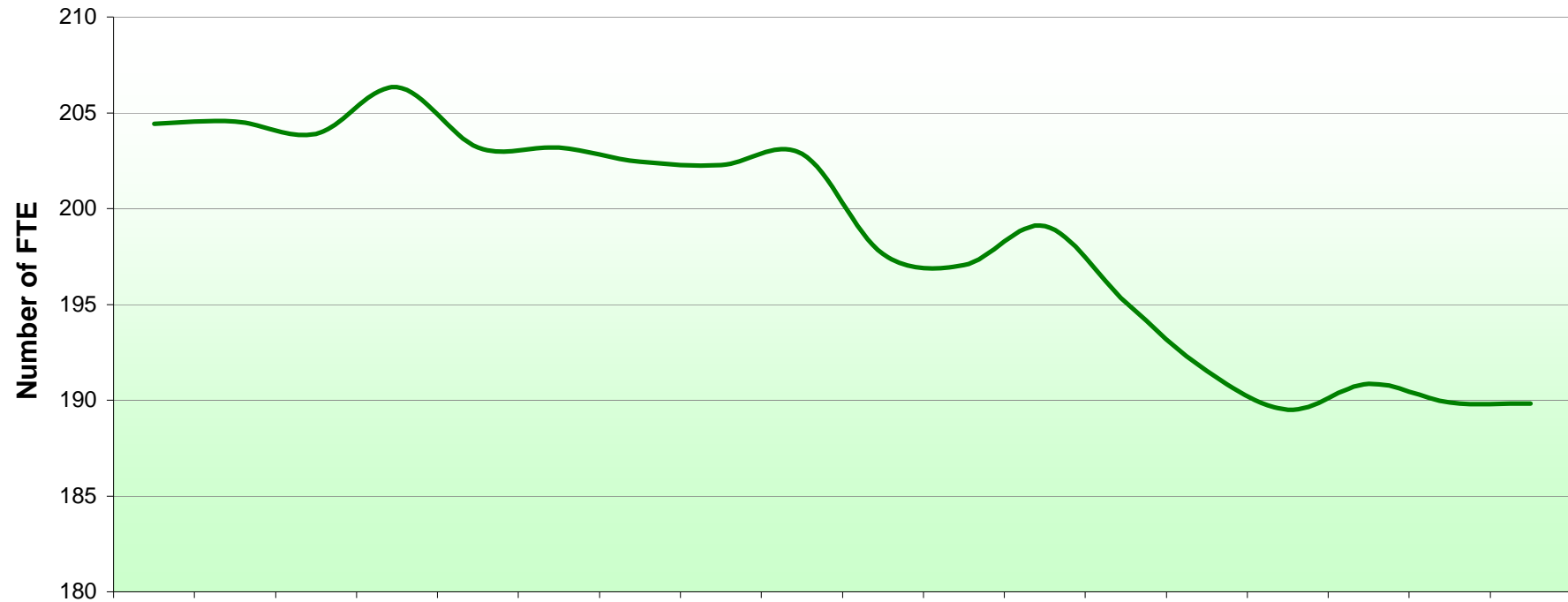
3. Establishment Statistics

3.1 Headcount excluding Casual Staff - July 2009 to December 2010



	Jul-2009	Aug-2009	Sep-2009	Oct-2009	Nov-2009	Dec-2009	Jan-2010	Feb-2010	Mar-2010	Apr-2010	May-2010	Jun-2010	Jul-2010	Aug-2010	Sep-2010	Oct-2010	Nov-2010	Dec-2010
Headcount (not casuals)	224	224	225	225	226	225	223	220	222	219	218	215	211	212	210	209	208	205
Number of casuals	19	20	20	20	19	18	18	18	16	14	14	13	15	17	17	17	17	16

3.2 Number of full time equivalent staff * - July 2009 to December 2010:



	Jul-2009	Aug-2009	Sep-2009	Oct-2009	Nov-2009	Dec-2009	Jan-2010	Feb-2010	Mar-2010	Apr-2010	May-2010	Jun-2010	Jul-2010	Aug-2010	Sep-2010	Oct-2010	Nov-2010	Dec-2010
Number of FTE	204.43	204.55	203.88	206.34	203.2	203.2	202.46	202.26	202.85	197.63	197.05	199.09	195.09	191.53	189.51	190.87	189.87	189.83

* please note Casual staff are recorded as 0 FTE and therefore do not appear on this graph